

Word of the Day

Spring Term 2025

Week 24 – 3rd March 2025



'Words unlock the doors to a world of understanding...'

This Week's Words

Grasshopper

chill

sale

peek

moody

remember

Shinobi

deliver

mediocre

detest

recline

evade



VOCABULARY NINJA

Grasshopper (Tier 1)

chill

sale

peek

moody

remember



VOCABULARY NINJA

Shinobi (Tier 2)

deliver

mediocre

detect

recline

evade



VOCABULARY NINJA



Grasshopper Word of the Day

Word of the Day:

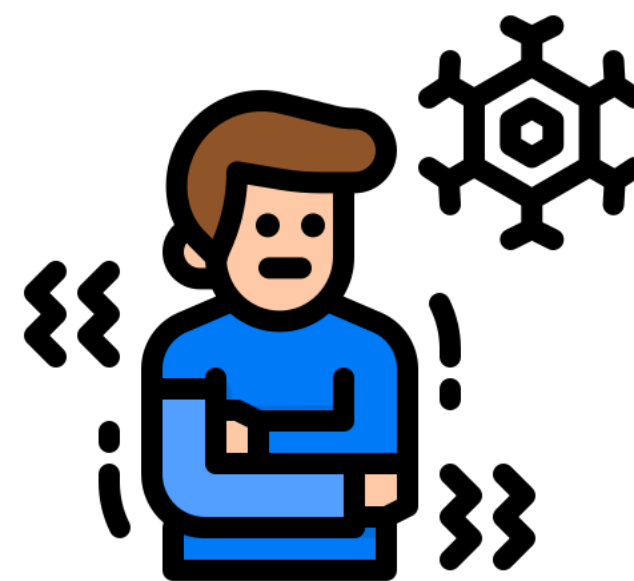
Pronunciation / Syllables

chill
(chill)

Word Class
(verb / noun)

Definition:

When you chill something or when it chills, you lower its temperature so that it becomes colder but does not freeze.



The cold air began to **chill** the classroom.

Synonym:

cool

refrigerate

Antonym:

heat

warm

Prefix / Suffix:

-ed

-y

Rhyme:

still

will

Link Word:

gradually

slightly



Grasshopper Word of the Day

Word of the Day:

Pronunciation / Syllables

sale
(sale)

Word Class
(noun)

Definition:

The sale of goods is the act of selling them for money.



The class held a book **sale** for charity.

Synonym:

trade
deal

Antonym:

Prefix / Suffix:

re-
-s

Rhyme:

scale
male

Link Word:

flash
huge



Grasshopper Word of the Day

Word of the Day:

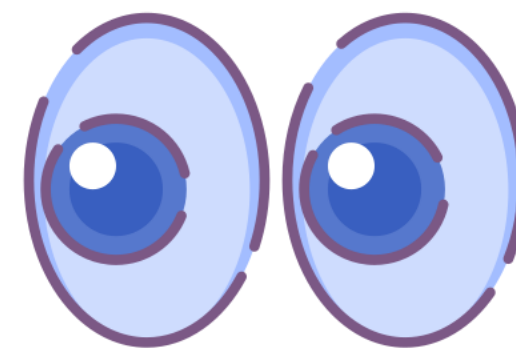
Pronunciation / Syllables

peek
(peek)

Word Class
(verb / noun)

Definition:

If you peek at something or someone, you have a quick look at them, often secretly.



Jen took a quick **peek** at Kiaan's work.

Synonym:

glance

snoop

Antonym:

ignore

overlook

Prefix / Suffix:

-ed

-ing

Rhyme:

week

seek

Link Word:

sneaky

secret



Grasshopper Word of the Day

Word of the Day:

Pronunciation / Syllables

moody
(mood-y)

Word Class
(adjective)

Definition:

Someone who is moody is bad-tempered and is unwilling to enjoy themselves.



Simon became **moody** during the class discussion.

Synonym:

sulky

gloomy

Antonym:

cheerful

happy

Prefix / Suffix:

-s

Rhyme:

Link Word:

overly

frequently



Grasshopper Word of the Day

Word of the Day: **remember**

Word Class
(verb)

Pronunciation / Syllables

(re-mem-ber)

Definition:

If you remember people or events from the past, you still have an idea of them in your mind and you are able to think about them.



Ms Hann asked the class to **remember** their homework.

Synonym:

recall

harsh

Antonym:

forget

miss

Prefix / Suffix:

mis-

-ing

Rhyme:

September

dismember

Link Word:

clearly

suddenly



Shinobi Word of the Day

Word of the Day:

Pronunciation / Syllables

deliver
(de-liv-er)

Word Class
(verb)

Definition:

If you deliver something that you have promised to do, make, or produce, you do, make, or produce it.



Mr Cain **delivered** the lesson clearly.

Synonym:

give

pass

Antonym:

refuse

shun

Prefix / Suffix:

re-

-ing

Rhyme:

river

liver

Link Word:

quickly

successfully



Shinobi Word of the Day

Word of the Day:

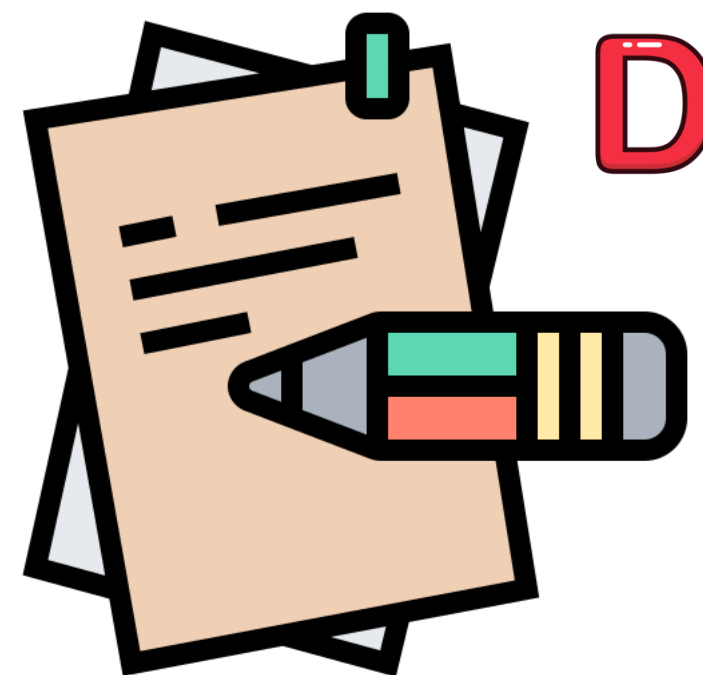
mediocre
(*me-di-o-cre*)

Word Class
(adjective)

Pronunciation / Syllables

Definition:

If you describe something as mediocre, you mean that it is of average quality, but you think it should be better.



Mary thought her essay was **mediocre**.

Synonym:

dull
ordinary

Antonym:

excellent
exceptional

Prefix / Suffix

Rhyme:

broker
poker

Link Word:

hopelessly
feel



Shinobi Word of the Day

Word of the Day:

Pronunciation / Syllables

detect
(*de-tect*)

Word Class
(verb)

Definition:

To detect something means to find it or discover that it is present somewhere by using equipment or making an investigation.



Mr Alvi could **detect** some students talking in the class.

Synonym:

notice

expose

Antonym:

conceal

hide

Prefix / Suffix:

-ion

-ing

Rhyme:

effect

direct

Link Word:

instantly

help



Shinobi Word of the Day

Word of the Day:

Pronunciation / Syllables

recline
(re-cline)

Word Class
(verb)

Definition:

If you recline on something, you sit or lie on it with the upper part of your body supported at an angle.



Simone **reclined** in her seat when reading her book.

Synonym:

lounge

sprawl

Antonym:

stand

straighten

Prefix / Suffix:

-ed

-er

Rhyme:

design

nine

Link Word:

gentle

fully



Shinobi Word of the Day

Word Class
(verb)

Word of the Day:

evade
(e-vade)

Pronunciation / Syllables

Definition:

If you evade something,
you find a way of not doing
something that you really ought to
do.



Kelly tried to **evade** Mrs Lum's question.

Synonym:

avoid

dodge

Antonym:

disclose

reveal

Prefix / Suffix:

-ing

-ed

Rhyme:

made

laid

Link Word:

completely

smoothly

Vocabulary Laboratory



Describe / Definition:

Use it in a sentence:

Focus Word (write below):

Word Class:

Synonyms:

(words with same / similar meaning)

Antonyms:

(words with opposite meaning)

Draw your sentence:

Rhymes:

(words that sound the same)

Link Words:

(Example: football = pitch, team, player)

Vocabulary Visualiser

Draw the
Grasshopper words
and bring them to life.



Word: chill

Word: peek

Word: sale

Word: moody



Vocabulary Visualiser

Draw the **Shinobi**
words and bring
them to life.



Word: deliver

Word: recline

Word: detect

Word: evade



Matching Meanings

Draw lines from the **Grasshopper** words to their definitions.

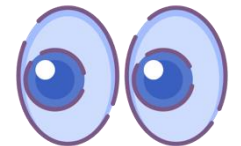


Grasshopper Word

Grasshopper Definitions

chill

If you *** at something or someone, you have a quick look at them, often secretly.



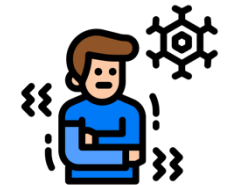
sale

Someone who is *** is bad-tempered and is unwilling to enjoy themselves.



peek

When you *** something or when it ***, you lower its temperature so that it becomes colder but does not freeze.



moody

If you *** people or events from the past, you still have an idea of them in your mind and you are able to think about them.



remember

The *** of goods is the act of *** them for money.



Matching Meanings

Draw lines from the **Shinobi** words to their definitions.



Shinobi Word

Shinobi Definitions

deliver

To *** something means to find it or discover that it is present somewhere by using equipment or making an investigation.



mediocre

If you describe something as ***, you mean that it is of average quality but you think it should be better.



detect

If you *** on something, you sit or lie on it with the upper part of your body supported at an angle.



recline

If you *** something, you find a way of not doing something that you really ought to do.



evade

If you *** something that you have promised to do, make, or produce, you do, make, or produce it.





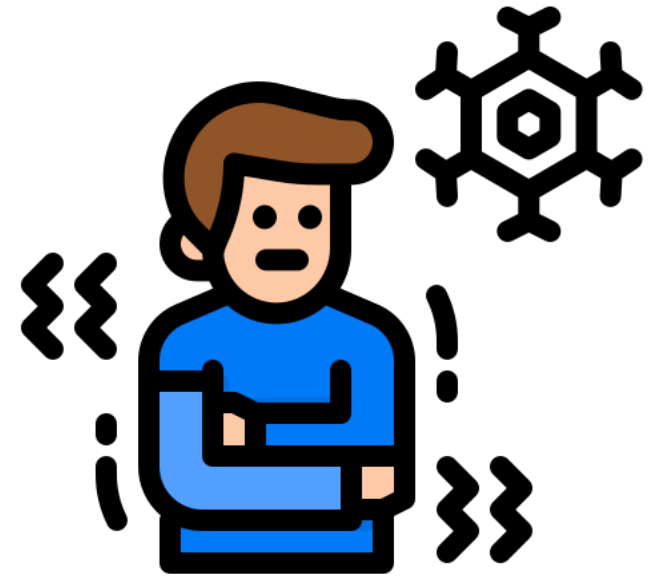
Display Slips

The following slides are for classroom display. As you teach each Word of the Day, words can be displayed in the classroom to enable pupils to use the taught vocabulary in an independent manner.





chill

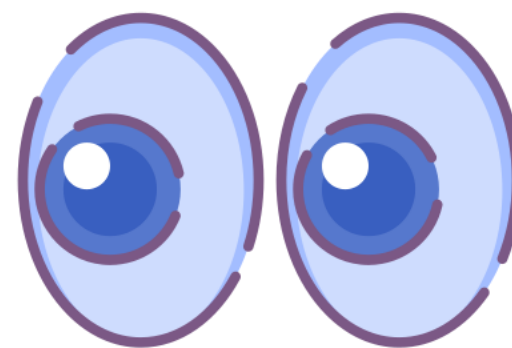


sale





peek

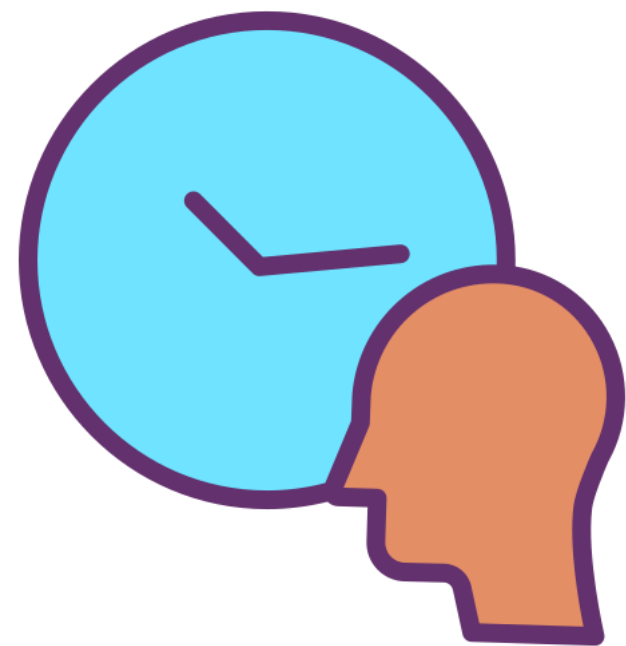


moody





remember

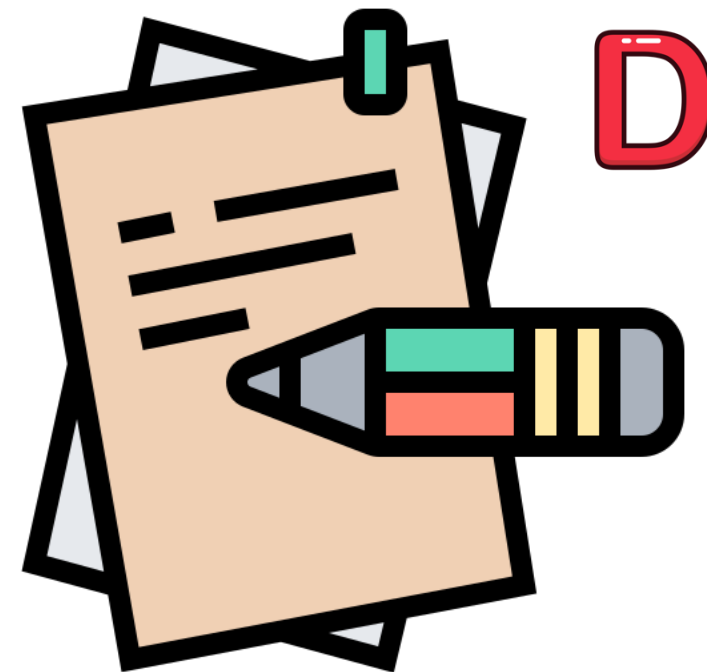


deliver





mediocre



detect





recline



evade





Font Variation

The following display slips contain the same words, but have a more regular font, which have a more regular formation of 'a' and 'g'. Futura is the name of the font.




worried



opini

asure

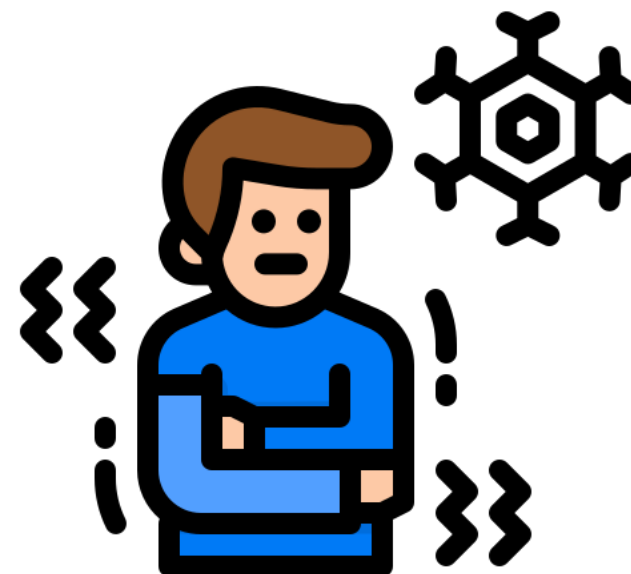


dia





chill

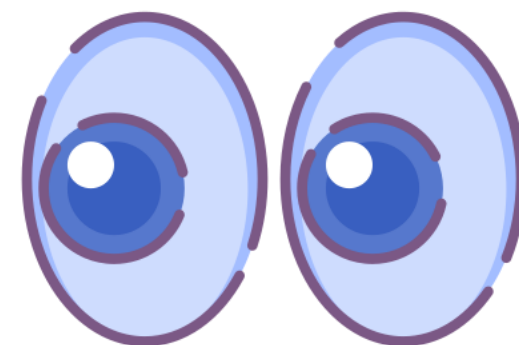


sale





peek

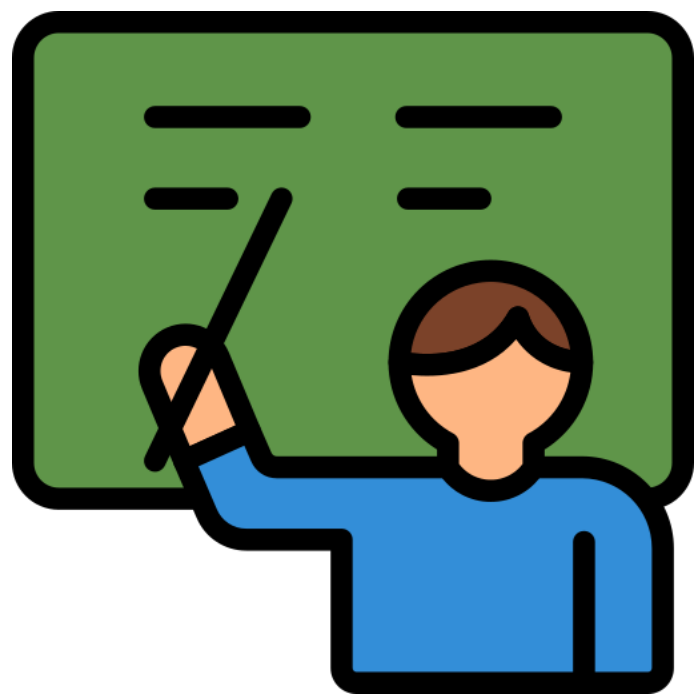
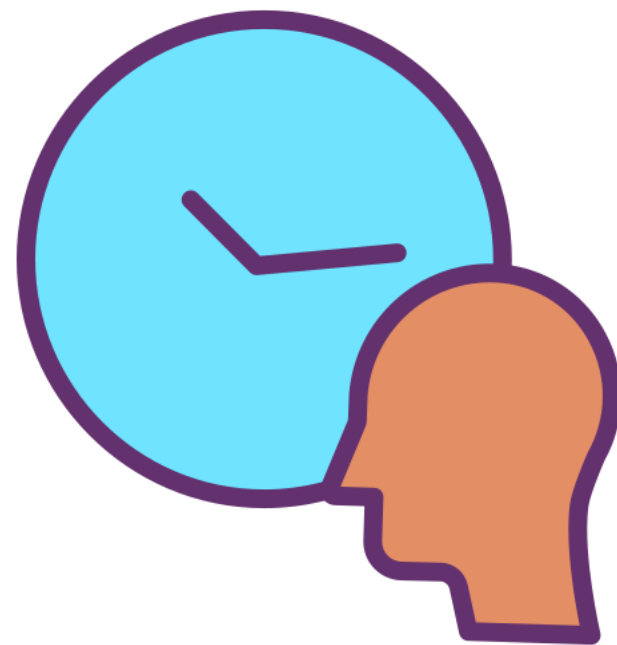


moody





remember

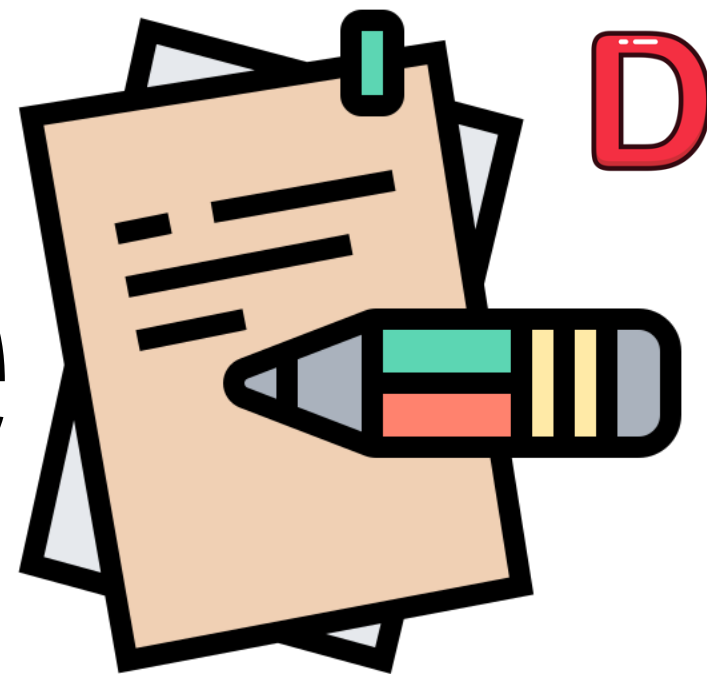


deliver





mediocre



detect





recline



evade

